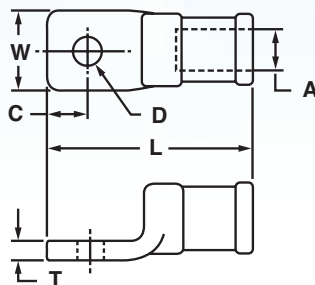


HEAVY DUTY CAST COPPER LUGS

Heavy Duty One Hole Cast Copper Compression Lugs

Type TLU-S

- Provides excellent mechanical strength
- Cast out of pure copper alloy for high conductivity
- Entire connector is electro-tin plated for corrosion resistance
- Can be installed with existing hydraulic crimping tools



CATALOG NUMBER	A CONDUCTOR SIZE	D BOLT SIZE	APPROXIMATE DIMENSIONS (IN.)				T & B DIE INDEX NO.
			L	W	T	C	
TLU-W8S	8 Str.	#10	1.44	.50	.13	.31	29
TLU-W6S	6 Str.	1/4	1.44	.50	.13	.31	29
TLU-W4S	4 Str.	1/4	1.44	.50	.13	.31	29
TLU-W2S	2 Str.	1/4	2.00	.75	.25	.44	45
TLU-W1S	1 Str.	1/4	2.00	.75	.25	.44	45
TLU-1/0S	1/0 Str.	3/8	2.00	.75	.25	.44	45
TLU-2/0S	2/0 Str.	3/8	2.63	1.00	.28	.56	66
TLU-3/0S	3/0 Str.	3/8	2.63	1.00	.28	.56	66
TLU-4/0S	4/0 Str.	3/8	2.63	1.00	.28	.56	66
TLU-025S	250 kcmil	1/2	3.25	1.19	.31	.75	76
TLU-030S	300 kcmil	1/2	3.25	1.19	.31	.75	76
TLU-035S	350 kcmil	1/2	3.75	1.38	.38	.75	99
TLU-040S	400 kcmil	1/2	3.75	1.38	.38	.75	99
TLU-050S	500 kcmil	1/2	3.75	1.38	.38	.75	99
TLU-060S	600 kcmil	1/2	3.75	1.63	.44	.75	112
TLU-070S	700 kcmil	1/2	3.75	1.63	.44	.75	112
TLU-075S	750 kcmil	1/2	3.75	1.63	.44	.75	112
TLU-080S	800 kcmil	1/2	4.50	1.88	.47	.94	130
TLU-090S	900 kcmil	5/8	4.50	1.88	.47	.94	130
TLU-100S	1000 kcmil	5/8	4.50	1.88	.47	.94	130
TLU-125S	1250 kcmil	5/8	5.00	2.25	.50	1.06	150
TLU-150S	1500 kcmil	5/8	5.00	2.25	.50	1.06	161
TLU-175S	1750 kcmil	5/8	5.88	2.50	.50	1.19	175
TLU-200S	2000 kcmil	5/8	6.13	2.75	.50	1.31	187

For blank pad, add suffix "-U" to catalog number

Above terminals can be installed with the following T&B Tooling: 12 ton head (13642), 20 ton head (21920), and 40 ton head (21940)

T&B is a registered trademark of its respective company